



**WORKING PAPER**

**N° 2022-5**

**HOW WAGES RESPOND TO THE JOB-FINDING  
AND JOB-TO-JOB TRANSITION RATES ?  
EVIDENCE FROM NEW ZEALAND  
ADMINISTRATIVE DATA**

CHRISTOPHER BALL, NICOLAS GROSHENNY,  
ÖZER KARAGEDIKLI, MURAT ÖZBILGIND, FINN ROBINSON

[www.tepp.eu](http://www.tepp.eu)

TEPP – Theory and Evaluation of Public Policies - FR CNRS 2042

# How wages respond to the job-finding and job-to-job transition rates? Evidence from New Zealand administrative data<sup>\*</sup>

Christopher Ball,<sup>a</sup> Nicolas Groshenny,<sup>b,e</sup> Özer Karagedikli,<sup>c,e,f</sup>  
Murat Özbilgin<sup>d</sup> and Finn Robinson<sup>a</sup>

<sup>a</sup> Reserve Bank of New Zealand

<sup>b</sup> Le Mans Université, GAINS-TEPP (CNRS 2042)

<sup>c</sup> Asia School of Business

<sup>d</sup> New Zealand Treasury

<sup>e</sup> Centre for Applied Macroeconomic Analysis

<sup>f</sup> University of Marburg

March 10, 2022

## Abstract

We use administrative data from New Zealand and exploit regional variations to evaluate the predictive power for wage dynamics of the job-finding and job-to-job transition rates. We find that the job-finding rate from unemployment plays a role in describing the wage dynamics of newly hired workers even after controlling for the job-to-job transition rate. The wages of new hires are much more responsive to both transition rates than the wages of job stayers. We then distinguish between the new hires transitioning from employment (job switchers) and the new hires coming from unemployment. The wages of job switchers are primarily related to the pace of job-to-job reallocation and less significantly to the job-finding rate. The wages of new hires from unemployment are exclusively linked to the job-finding rate and this association is stronger at the lower half of the wage distribution. The wages of new hires from unemployment are more responsive to the job-finding rate than the wages of job stayers. The job-to-job transition rate has no impact on the wage dynamics of job stayers once the job-finding rate and the transition rate from inactivity to employment are controlled for.

**JEL Codes:** J31, J64

---

<sup>\*</sup>The authors would like to thank two anonymous referees, Bernd Hayo, Dean Hyslop, George Kudrna, François Langot, Anella Munro, Adrian Pagan, Ole Rummel, Brian Silverstone, Anthony Terriau and Giulio Zanella for their comments and suggestions, and seminar participants at the Asia School of Business, Reserve Bank of New Zealand, Le Mans University, the ACE 2019 Conference in Melbourne and the NZAE 2019 Conference in Wellington for comments. Corresponding author: Ozer Karagedikli – [ozer.karagedikli@asb.edu.my](mailto:ozer.karagedikli@asb.edu.my).

## 1. Introduction

Search and matching models are widely used to analyse wage dynamics. In the canonical search and matching model of the labor market due to Diamond, Mortensen, and Pissarides (henceforth the DMP model), the pace at which unemployed workers find jobs - the job-finding rate - is a crucial factor determining cyclical wage fluctuations. In that model, wages are set through bilateral bargaining between the employer and the employee. The bargaining power of a worker is determined by the attractiveness of their outside option, namely joining the pool of unemployed workers to look for another job. In the case of Nash bargaining, the equilibrium wage is a weighted average of a worker's productivity and her reservation wage, where the latter is directly influenced by the job-finding rate (the share of unemployed workers who transition to employment in a given period). According to the DMP model, when the job-finding rate is high, workers have more bargaining power so that, all else equal, wages increase.<sup>1</sup>

A key assumption in the DMP model is that unemployed workers are the only source of labor for firms to fill their vacancies. Put differently, an employed person has to first become unemployed before she can start seeking another job. This assumption ignores two groups of workers: employed people who are searching for jobs (on-the-job search) and people who are not classified as part of the labor force but who may nonetheless be willing to work and are perhaps casually looking for jobs.

Moscarini and Postel-Vinay (2016, MPV) observe that, in the Burdett and Mortensen (1998, BM) model, the job-to-job transition rate is the primary driver of wages. Competition between firms for workers who are already employed drives real wages higher through two channels: a strategic effect which benefits both job stayers and job movers, and a composition effect which only benefits job movers. In the BM model, the job-finding rate plays no role in shaping wage dynamics. This prediction differs strikingly from the DMP model. Motivated by this insight, MPV analyse U.S. aggregate time series data on the job-finding rate and the job-switching rate.<sup>2</sup> MPV find that the evolution of wages over the business cycle is closely linked to the pace of job-to-job transitions and less so to variations in the job-finding rate. They interpret their findings as empirical support in favor of the BM model against the DMP model.<sup>3</sup>

Karahan et al. (2017) further assess the relative explanatory power of these two views of wage setting. They employ a panel dataset that exploits state-level variations to measure the relative influence of the job-finding and job-to-job transition rates on cyclical wage fluctuations. They find that the wage dynamics of new hires and job

---

<sup>1</sup>See Pissarides (2000) or Petrosky-Nadeau and Wasmer (2017) for a textbook treatment of the model.

<sup>2</sup>These aggregate data were constructed by Fallick and Fleischman (2004) using the the CPS.

<sup>3</sup>However, one should note that it is the present discounted value of wages (the user cost of labor) that matters for firm's hiring decision in the DMP model. Kudlyak (2014) and Basu and House (2016) show that the user cost of labor is even more procyclical than what wage series for new hires suggest.

stayers are both tightly linked to the pace of job-to-job transitions. Moreover, the explanatory power of the job-finding rate vanishes once they control for job-to-job flows. Their findings thus support the view that on-the-job search is the prevailing factor behind wage dynamics in the US.<sup>4</sup>

Our paper is closely related to Karahan et al. (2017). We use New Zealand administrative data from the linked employer-employee dataset (LEED) and exploit regional variations to assess the explanatory power of the job-finding and job-to-job transition rates for wage fluctuations. We find that new-hire earnings are tightly linked to the pace of job-to-job reallocation: A one percentage point increase in the job-to-job transition rate yields a 1.61 percent rise in the earnings of newly hired workers. However, contrary to Karahan et al. (2017) and Moscarini and Postel-Vinay (2016), we find that the job-finding rate from unemployment plays a role in describing the wage dynamics of newly hired workers even after controlling for the job-to-job transition rate. The estimated semi-elasticity of earnings to the job-finding rate is 0.30 (significant at the 5 percent level) for new hires. We also find that the wages of job stayers are much less responsive to the labor market conditions than the wages of newly hired workers. For job stayers, the semi-elasticities of earnings to the job-finding and job-to-job transition rates are respectively 0.07 and 0.22 (both significant at the 5 percent level).

We then investigate whether our baseline results remain robust when we control for the rate of transitions from inactivity to employment (the *NE* rate). Once we control for *NE* flows, the explanatory power of the job-to-job transition rate becomes insignificant for stable earnings. Thus, the strategic channel of the BM model might not be relevant in New Zealand. Job-stayer earnings then appear to be connected only to the job-finding rates from unemployment and from inactivity. This result suggests that the cyclicity of workers' attachment to the labor market, a feature overlooked in the BM and DMP models, could matter for the dynamics of stable earnings. This seems consistent with existing empirical evidence for the US.<sup>5</sup> However, the LEED data does not allow us to disentangle migrants who start working quickly after their arrival in New Zealand from *NE* flows. Hence, we prefer to interpret the influence of *NE* transitions on stable earnings with a pinch of salt.

Turning to new hires, we find that controlling for the *NE* transition rate has no impact on our baseline results: the coefficients of the job-finding and job-to-job rates remain unchanged, 0.29 and 1.56 respectively (both highly significant). The coefficient of the *NE* rate is imprecisely estimated and barely significant.

---

<sup>4</sup>Fallick and Fleischman (2004), Faberman and Justiniano (2015) and Mukoyama et al. (2018) provide further evidence on the importance of on-the-job search in the US. For related evidence from New Zealand and Australia, see Karagedikli (2018) and Deutscher (2019) respectively.

<sup>5</sup>Moscarini and Postel-Vinay (2017) document a strong association between wages and the pace of *NE* flows. Elsby et al. (2015) show that the participation margin accounts for one third of unemployment volatility, while Armstrong and Karagedikli (2017) argue that the contribution of the participation margin could be even greater in New Zealand.

Finally, to discover the source of the influence of the job-finding rate on new-hire wages, we focus on the provenance of newly hired workers. In doing so, we connect with the broader debate on the lack of wage rigidity in the data. Gertler et al. (2020) argue that the pronounced procyclicality of new-hire wages observed in the data is due to workers switching jobs and does not apply to new hires coming from unemployment. The LEED data allows us to distinguish between new hires from employment (job switchers) versus new hires from unemployment. We then evaluate the predictive power of the job-finding and job-to-job transition rates for each group. We find the following results: (i) The earnings of new hires from unemployment are *exclusively* linked to the job-finding rate from unemployment, and this association is tighter at the bottom of the wage distribution. (ii) Contrary to Gertler et al. (2020), the earnings of new hires from unemployment are more responsive to the labor market conditions (the job-finding rate from unemployment) than the earnings of job stayers. (iii) Consistent with a job-ladder mechanism (and with the composition effect in the BM model), the dominant predictor of job-switchers' earnings is the job-to-job transition rate, but the job-finding rate from unemployment retains some influence in the lower half of the distribution (the *NE* rate plays no role). (iv) The semi-elasticity of job-switchers' earnings to job-to-job flows is largest (equal to 3.43) at the lowest decile of the earnings distribution, highlighting the essential role of the bottom rung of the job-ladder. This finding is consistent with recent evidence by Haltiwanger et al. (2018) for the US.

## 2. Econometric strategy

We first introduce the administrative data. Then we outline the empirical specifications used in our study.

### 2.1 Data

Our data comes from a single source: the administrative Linked Employer and Employee Data (LEED) from the Inland Revenue Department (IRD).<sup>6</sup> LEED covers the entire population who paid some kind of Pay As You Earn (PAYE) income tax in New Zealand. We compute the number of job switchers (people switching job within two consecutive quarters), job stayers (continuing in the same job), unemployed people entering employment (UE) and non-participants transitioning directly into employment (NE).<sup>7</sup> We also calculate average nominal earnings for each of these groups.<sup>8</sup>

---

<sup>6</sup>The full data disclaimer is available on page 19.

<sup>7</sup>More specifically, LEED only enables us to classify as unemployed any person receiving an income support benefit, such as unemployment benefit

<sup>8</sup>We use data on total earnings as in Karahan et al. (2017). We are unable to derive hourly earnings as data on hours worked were not collected in LEED until April 2020.

Our quarterly observations use the middle month as the reference period, and are compared to the middle month of the previous quarter. In the New Zealand context, under the standard assumption that within-month job transitions are negligible, this approach should reduce the extent to which our quarterly data are affected by the time-aggregation bias.<sup>9</sup> In addition, we use the highest income employer as the reference to reduce the number of spurious job transitions identified for those with multiple employers within a month.

We then construct the time series of nominal earnings, job-finding rates and job-to-job transition rates for each of the 16 regions in New Zealand.<sup>10</sup> Our data covers the 2001Q1 to 2018Q2 period. Figure 1 plots the job-to-job transition rate for each region. Before the Global Financial Crisis, most regions had fluid labor markets with robust rates of job-to-job transition. Every region experienced a large decline in job-to-job flows around 2008-2009, and several of them had not recovered to their pre-crisis levels by the end of our sample period.

## 2.2 Empirical specifications

Our objective is similar to Karahan et al. (2017) where the empirical framework is not intended to establish a definitive causal relationship. Rather we want to distinguish between competing theories of labor market flows based on their respective prediction in terms of the association between wages, the job-finding rate and the job-to-job transition rate.

We use the micro-data from New Zealand to test empirically the theoretical predictions of MPV about the relative explanatory power of the job-finding and job-to-job transition rates for wage growth. In line with Karahan et al. (2017), we estimate the following two fixed-effect specifications:

$$\log W_{it} = \alpha_i + \alpha_t + \beta_i t + \alpha_u \Lambda_{it}^u + \epsilon_{it} \quad (1)$$

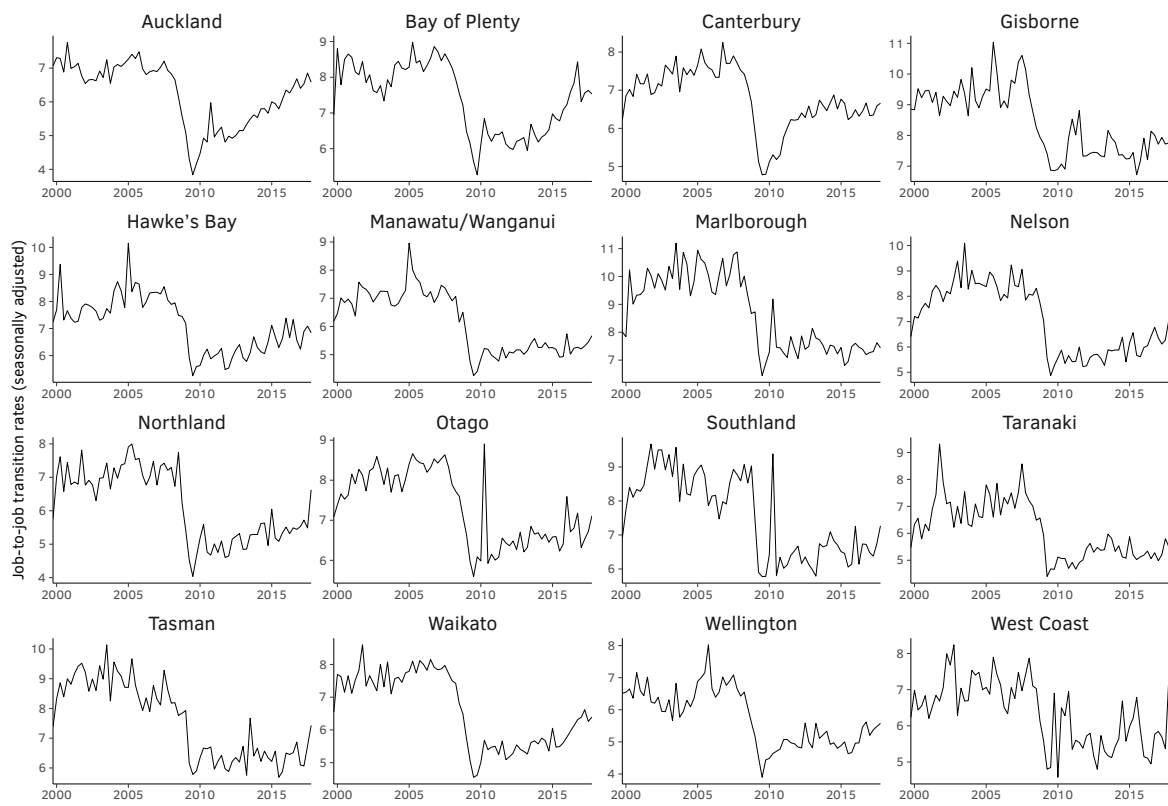
$$\log W_{it} = \alpha_i + \alpha_t + \beta_i t + \alpha_u \Lambda_{it}^u + \alpha_e \Lambda_{it}^e + \epsilon_{it} \quad (2)$$

---

<sup>9</sup>In terms of our quarterly data, we may be incorrectly assigning a job-to-job transition to someone who transitions to unemployment in the first or last month of the quarter while moving between employers in the observed middle months. However, there are stand-down periods in the New Zealand transfer system which result in a delay of about 3 weeks before new unemployment beneficiaries receive money (in place until 2020), which lower the likelihood of these transitions being miscoded. Moreover, employees need to give their current employers at least 4 weeks' notice before leaving their jobs. Hence the spurious job transition events outlined in Karahan et al. (2017) seem less likely to apply to our quarterly data.

<sup>10</sup>Karahan et al. (2017) also use nominal earnings. There are no regional deflator data available for New Zealand.

**Figure 1**  
Regional job-to-job transition rates in New Zealand (Seasonally adjusted)



Source: Statistics New Zealand, author estimates.

where  $W_{it}$  denotes nominal earnings in region  $i$  in calendar quarter  $t$ .  $\Lambda_{it}^u$  is the transition probability from unemployment to employment in region  $i$  in quarter  $t$ . We compute it as the number of benefit recipients in region  $i$  in  $t-1$  who enter employment in the same region within the next quarter, divided by the total number of benefit recipients in region  $i$  in  $t-1$ .<sup>11</sup>  $\Lambda_{it}^e$  is the regional job-to-job transition probability. We compute it as the share of employed people who transition from one employer in quarter  $t-1$  to another in quarter  $t$ , with no observed intervening spell of non-employment.<sup>12</sup> The parameter  $\alpha_i$  captures regional fixed effects, while the term  $\beta_i t$  allows for a region-specific time trend. The time fixed effect  $\alpha_t$  controls for variation in aggregate inflation and productivity as well as other aggregate cyclical factors. We check the validity of the fixed effects by using Hausmann's specification test. The test rejects the null hypothesis that the regional fixed effects are uncorrelated with the regressors, which confirms that our fixed-effect specification is appropriate.

Estimating specifications (1) and (2) replicates the approach of Karahan et al. (2017) for New Zealand.<sup>13</sup> We then include the regional transition probability from non-participation to employment,  $\Lambda_{it}^n$ , to obtain the following augmented specification:

$$\log W_{it} = \alpha_i + \alpha_t + \beta_i t + \alpha_u \Lambda_{it}^u + \alpha_e \Lambda_{it}^e + \alpha_n \Lambda_{it}^n + \epsilon_{it}. \quad (3)$$

Adding the *NE* transition rate should help us to capture the very short-term unemployed (who may not register for unemployment insurance and would therefore be counted as *NE* instead of *UE* flows) and to appraise the influence of the participation margin (Elsby et al. (2015), Armstrong and Karagedikli (2017)).<sup>14</sup>

### 3. Results

We start with the replication of Karahan et al. (2017) for New Zealand. We then discuss the findings from the augmented specification that aims to account for the participation margin. Finally we present results for the earnings distribution of job stayers, job switchers and new hires from unemployment.

<sup>11</sup>Not all unemployed are registered to receive an unemployment benefit. Therefore, our measure of the job-finding rate is likely to exclude the very short-term unemployed, which are the most likely to get a job. This may bias downward our estimates of the relative predictive power of the job-finding rate. Below we will explore this issue by controlling for *NE* transitions.

<sup>12</sup>We ensure that a person received continuous earnings throughout two consecutive quarters. We then check whether that person received income from the same employer or not.

<sup>13</sup>Similarly to Karahan et al. (2017), a caveat of our approach to test the predictions of the BM model is that  $\Lambda_{it}^e$  and  $\Lambda_{it}^u$  measure the realized transition rates rather than the arrival rates of job offers to employed and unemployed workers respectively.

<sup>14</sup>However, our LEED-based measure of *NE* flows may include recent migrants to New Zealand, which we cannot identify separately. If migrants are self-selected and there are differences in average skill sets between natives and migrants, the interpretation of the coefficient  $\alpha_n$  might not be straightforward.



### 3.1 Replication of Karahan et al. (2017) for New Zealand

MPV point out that, in the BM model, wages and job-to-job transitions interact through two mechanisms: a compositional effect and a strategic rent-extraction channel. The former mechanism follows from job-switchers climbing up the job ladder: workers transit between jobs when they receive (and accept) a higher wage offer. The latter effect reflects the competition between firms to retain their workforce when workers have more outside options: employees may extract a wage increase by generating an outside offer and asking their current employer to match it. In that case, the worker does not switch jobs but still gets a pay rise. Both channels favor the job-to-job transition rate over the job-finding rate from unemployment in terms of explaining the dynamics of new-hire earnings. In addition, the strategic effect also implies a positive relationship between job-to-job transitions and job-stayer earnings.

The New Zealand micro data allows us to distinguish between job-stayers and new hires. Haefke et al. (2013) show that the wages of newly hired workers are much more volatile and procyclical than the wages of job stayers. We follow Karahan et al. (2017) and estimate equations (1) and (2) for these two groups. The results are reported in Table 1.<sup>15</sup> The first two columns of Table 1 report the results for stable earnings. When we only include the job-finding rate, the semi-elasticity of stable earnings to the job-finding rate is about 0.08 and significant at the 5 percent level. A one percentage point increase in the job-finding rate is accompanied by a 0.08 percent increase in earnings for job-stayers. Controlling for the job-to-job transition rate has little impact on the explanatory power of the job-finding rate which, in contrast to Karahan et al. (2017), remains significant at the 5 percent level. The association between stable earnings and the job-to-job transition probability is stronger, with an estimated semi-elasticity equal to 0.22 and significant at the 5 percent level, providing some support for the strategic rent-extraction channel.<sup>16</sup>

The next two columns present the results for new-hire earnings. When included on its own, the job-finding rate is a significant predictor of earnings growth for new hires with an estimated semi-elasticity equal to 0.37. In stark contrast to Karahan et al. (2017) and Moscarini and Postel-Vinay (2016), when we control for the job-to-job transition rate, we find that the explanatory power of the job-finding rate does not evaporate: it declines slightly to 0.30 but remains significant at the 5 percent level. We find a tight link between new-hire earnings and the job-to-job transitions, with a highly-significant semi-elasticity equal to 1.61. Our results confirm that the wages of newly hired workers

---

<sup>15</sup>We use the terms 'job stayers' and 'stable earners' interchangeably to denote people who remain employed in the same job.

<sup>16</sup>We will see in the next section that this support vanishes when we control for transitions from inactivity to employment.

**Table 1**  
Main Results: Replication of Karahan et al. (2017)

	Stable Earners		New Hires		All	
	(1)	(2)	(1)	(2)	(1)	(2)
$\Lambda^u$	0.077** (0.030)	0.067** (0.025)	0.373** (0.140)	0.300** (0.122)	0.252** (0.088)	0.204** (0.076)
$\Lambda^e$		0.222** (0.099)		1.611*** (0.304)		1.054*** (0.180)

**Note:** Number of observations: 1168. Robust standard errors (clustered at regional level) in parentheses. \*\*\* :  $p < 0.01$  , \*\* :  $p < 0.05$  , \* :  $p < 0.1$ .

are much more responsive to labor market conditions than the wages of job stayers, as pointed out by Haefke et al. (2013).

The last two columns show the results for all earnings, with no distinction between new-hires and stable earners. On its own, the job-finding rate is significant. Once we include the job-to-job transition rate, the explanatory power of the job-finding rate diminishes slightly, from 0.25 to 0.20, but remains significant. The coefficient estimate of the job-to-job transition rate is about five times larger than the one of the job-finding rate. A one percentage point increase in the job-to-job transition rate yields roughly a 1 percent rise in average earnings. To sum up, compared to Karahan et al. (2017), the key difference is that the job-finding rate from unemployment plays a role in describing wage dynamics of newly hired workers even after controlling for the job-to-job transition rate.

### 3.2 Taking the participation margin into account

As discussed above, the LEED data only allows us to classify as unemployed any person receiving an income support benefit, such as unemployment insurance benefit. Some short-term unemployed may not register for the unemployment benefit, especially the individuals who are more likely to find a job quickly (because they search harder or are more employable). Our procedure will mistakenly count these transitions as *NE* instead of *UE* flows and our measure of the job-finding rate will miss these individuals. We think this could work against the job-finding rate, and so might artificially bias upward the explanatory power of the job-to-job rate.

Controlling for the *NE* transition rate may help account for the unregistered short-term unemployed and, more generally, may shed light on the influence of the participation margin. Moscarini and Postel-Vinay (2017) find evidence of a tight link between wages and *NE* transitions in the US. Elsby et al. (2015) document that flows in and out of the labor force are responsible for up to a third of the cyclical volatility of the

unemployment rate. Armstrong and Karagedikli (2017) argue that the significance of the participation margin might even be larger in New Zealand.

To explore these issues, we estimate specification (3), which adds the regional inactivity-to-employment transition rates. To assess the robustness of our baseline findings to controlling for *NE* transitions, Table 2 compares the results from specifications (2) and (3).

**Table 2**  
Controlling for *NE* transitions

	Stable Earners		New Hires		All	
	(2)	(3)	(2)	(3)	(2)	(3)
$\Lambda^u$	0.067** (0.025)	0.060** (0.022)	0.300** (0.122)	0.292** (0.121)	0.204** (0.076)	0.197** (0.075)
$\Lambda^e$	0.222** (0.099)	0.176 (0.102)	1.611*** (0.304)	1.559*** (0.298)	1.054*** (0.180)	1.004*** (0.177)
$\Lambda^n$		1.441*** (0.302)		1.633* (0.753)		1.575*** (0.506)

**Note:** Number of observations: 1168. Robust standard errors (clustered at regional level) in parentheses. \*\*\* :  $p < 0.01$  , \*\* :  $p < 0.05$  , \* :  $p < 0.1$ .

For stable earners, we find that controlling for *NE* transitions alters the estimation results in two ways. First, the influence of the job-finding rate remains stable and significant while the predictive power of the job-to-job rate becomes insignificant, casting doubt on the significance of the strategic rent-extraction effect in the New Zealand context. The stable earners group consists of employed people who do not engage in search activity and of employed people who engaged in on-the-job search but decided to stay in the same job. The rent-extraction channel only applies to the latter group and it might be hard to detect evidence of it when the strategically searching job-stayers are scarce compared to the non-searching job stayers. Second, the semi-elasticity of stable earnings to *NE* flows is large (equal to 1.44) and highly significant. Note, however, that the LEED data does not enable us to distinguish between new migrants and non-participants. Hence we should interpret this coefficient cautiously. Wages of job stayers are manifestly related to the job-finding rates from inactivity and unemployment, pointing towards a link between stable earnings and workers' participation decision.

For new-hire earnings, controlling for *NE* transitions has no effect on the baseline findings: the coefficients of the job-finding and job-to-job rates remain unchanged, 0.29 and 1.56 respectively (both highly significant). The coefficient of the *NE* rate is imprecisely estimated and barely significant.

Interestingly, the relationship between *NE* transitions and earnings is much stronger for job-stayers than for new hires. This is consistent with the view that our measure of *NE* flows partly reflect inflows of migrants who start working immediately. Coleman and Karagedikli (2018) and Howard (2020) provide evidence indicating that positive net migration flows boost aggregate demand and put broad-based upward pressures on prices throughout the economy, including the labor market, thereby lifting the average wage.

### 3.3 Looking at the earnings distribution of stable earners, job switchers and new hires from unemployment

The LEED data allows us to go beyond the usual dichotomy between stable earners and new hires. To uncover the origin of the influence of the job-finding rate on new-hire wages, we follow Gertler et al. (2020) and distinguish between new hires coming from unemployment (*UE* new hires) versus new hires switching from one job to another.<sup>17</sup> Furthermore, to understand which part of the earnings distribution contributes most to the explanatory power of the job-finding rate, we estimate specification (3) for each group at each decile of that group's earnings distribution. Table 3 shows the results for stable earners, while Table 4 focuses on the two categories of new hires.

**Table 3**  
Regressions by Deciles for Stable Earnings

Decile	Job Stayers		
	$\Lambda^u$	$\Lambda^e$	$\Lambda^n$
10th	0.131*	0.722	1.154*
20th	0.081**	0.295*	1.169***
30th	0.056**	0.222*	1.334***
40th	0.041*	0.176	1.356***
50th	0.045*	0.112	1.246***
60th	0.061**	0.094	1.301***
70th	0.061**	0.103	1.299***
80th	0.059***	0.069	1.393***
90th	0.061***	0.081	1.451***

**Note:** Number of observations: 1168. \*\*\* :  $p < 0.01$ , \*\* :  $p < 0.05$ , \* :  $p < 0.1$ .

Looking at Table 3, we see a positive relationship between stable earnings and the job-finding rate at all deciles of the earnings distribution. The link is quantitatively small but consistently significant. The predictive power of the job-to-job rate is insignificant

<sup>17</sup>For completeness, we have also considered new hires transitioning from inactivity. However, none of the transition rates appeared to be linked with the earnings of that group. These results are available upon request.

at most deciles, casting doubt on the the strategic effect of the BM model in the New Zealand context. Stable earnings are tightly linked with the *NE* rate. This is in line with Moscarini and Postel-Vinay (2017) who find a close relationship between wages and *NE* transitions in the US, as well as with Armstrong and Karagedikli (2017) who argue that *NE* flows are particularly large in New Zealand. However, as discussed above, LEED does not enable us to disentangle migrants from non-participants, and we cannot rule out the conjecture that migration flows are a prime determinant of cyclical variations in stable earnings in New Zealand. A deeper analysis of the roles of migrants and non-participants in New Zealand wage dynamics is an interesting avenue for future research.

**Table 4**  
Regressions by Deciles for New-Hire Earnings

Decile	<i>UE</i> New Hires			Job Switchers		
	$\Lambda^u$	$\Lambda^e$	$\Lambda^n$	$\Lambda^u$	$\Lambda^e$	$\Lambda^n$
10th	1.796***	1.299	-3.248	0.674**	3.430***	3.429
20th	2.040***	1.772	-2.596	0.486***	2.748***	1.558
30th	1.871***	1.165	-2.505	0.329***	2.439***	1.173
40th	1.480***	1.152	-1.749	0.249***	2.458***	1.202
50th	1.166***	1.197	-0.706	0.218***	2.496***	1.164
60th	0.931**	1.011	-0.357	0.161**	2.511***	1.455
70th	0.696**	0.918	0.334	0.096	2.495***	1.370
80th	0.404	1.031*	0.411	0.056	2.293***	0.741
90th	0.021	1.003*	0.371	0.007	1.661***	1.025

Note: Number of observations: 1168. \*\*\* :  $p < 0.01$  , \*\* :  $p < 0.05$  , \* :  $p < 0.1$ .

Turning to Table 4, we see that the earnings of newly hired workers transitioning from unemployment are *exclusively* linked to the job-finding rate. This association is stronger at the bottom of the distribution: the semi-elasticity is equal to 1.9 and highly significant at the three lower deciles. It then declines progressively as we move to higher deciles. Contrary to Gertler et al. (2020), the earnings of new hires from unemployment are more responsive to the labor market conditions (the job-finding rate from unemployment) than the earnings of job stayers. Interestingly, the influence of the job-finding rate is stronger on new-hire wages at lower deciles of the wage distribution, in line with findings of Katz and Krueger (1999) that the wage Phillips curve is more vivid for low-wage workers.

The earnings of job-switchers are primarily connected with the job-to-job transition rate. This association is tight and highly significant (at 1 percent) throughout the entire earnings distribution. The semi-elasticity of job-switcher earnings to the job-to-job rate is 3.43 at the lowest decile. It then declines gradually to reach 1.66 at the top decile. Surprisingly, the job-finding rate also plays a significant role at the bottom half of the earnings distribution of job-switchers. The explanatory power of the *NE* rate is insignificant at all deciles.

The results in this section include a number of insights, some of which are new, on the cyclical wage dynamics of newly hired workers. In contrast to Karahan et al. (2017) and Moscarini and Postel-Vinay (2016), our results show that the job-finding rate plays an important role in describing the cyclical wage dynamics of newly hired workers even after controlling for the job-to-job and *NE* rates. Indeed, the job-finding rate from unemployment is the only transition rate that consistently displays a significant relationship with the earnings of *all* categories of workers: job-stayers, new-hires from unemployment and new-hires switching jobs. Instead, once we control for the job-finding and *NE* rates, the job-to-job transition rate appears to be exclusively connected to the earnings of new hires switching jobs, suggestive of a pure composition effect. The fact that the semi-elasticity of job-switcher earnings to the job-to-job rate is largest at the lowest decile of the earnings distribution further highlights the importance of the bottom rung of the job-ladder, in line with Haltiwanger et al. (2018).

#### 4. Conclusions

In this paper, motivated by recent findings of Moscarini and Postel-Vinay (2016) and Karahan et al. (2017), we have attempted to distinguish between two models of wage determination – one in which the job-finding probability of the unemployed plays a key role (the DMP model), and an other in which it does not play any role for the benefit of the job-to-job transition rate (the BM model). To do so, we have used administrative data from New Zealand and replicated the empirical strategy of Karahan et al. (2017), exploiting pooled cross-regional variations, to assess the explanatory power of the job-finding and job-to-job transition rate for the cyclical wage dynamics of stable earners and new hires.

Although some of our results lend support to the view that on-the-job search is a prominent factor of cyclical wage dynamics in New Zealand - specifically, new-hire earnings are tightly linked to the pace of job-to-job reallocation - some others differ starkly from Karahan et al. (2017) and Moscarini and Postel-Vinay (2016). In particular, we find that the job-finding rate retains significant explanatory power for the earning dynamics of newly hired workers even when controlling for the pace of job-to-job transitions. This result poses a challenge to the BM model. When we control for *NE* flows, the explanatory power of the job-to-job transition rate disappears for stable earnings, suggesting that the strategic rent-extraction channel of the BM model is not relevant in the New Zealand context. Instead, the participation margin seems to matter for the evolution of stable earnings, an aspect neglected in the BM and DMP model.

To discover the source of the influence of the job-finding rate on the cyclical wage dynamics of new hires, we have then distinguished between the new hires coming from the unemployment pool and those transitioning from one job to another. For each

category, we have evaluated the comparative explanatory power of the job-finding rate at different deciles of the earnings distribution. Earnings of new hires from unemployment are exclusively linked to the job-finding rate, and this association is especially tight at the bottom of the earnings distribution. Moreover, the earnings of *UE* new hires are more responsive to the labor market conditions (the job-finding rate from unemployment) than the earnings of job stayers, in contrast to evidence reported by Gertler et al. (2020). Surprisingly, the job-finding rate also plays a role in describing the earnings dynamics of job-switchers at the lower half of the earnings distribution. However, job-switchers' earnings are primarily linked to the job-to-job transition rate, in agreement with the composition channel (i.e. a job-ladder mechanism) in the BM model. Furthermore, consistent with Haltiwanger et al. (2018), the bottom rung of the job-ladder is the most essential one.

Our findings can inform recurrent policy debates on cyclical wage dynamics. Understanding the mechanisms of labor market dynamics and wage fluctuations is paramount to any central bank pursuing a flexible inflation targeting strategy. In a number of countries, including New Zealand, the recent experience before the Covid-19 pandemic, marked by low unemployment rates and subdued wage growth, left many policymakers perplexed.<sup>18</sup> Our results highlight the prominence of a composition effect, working through a job-ladder mechanism, for wage growth in New Zealand. Besides, our findings reveal that the job-finding rate is linked to the wage dynamics of both stable earners and new hires, especially those coming from the unemployment pool.

Finally, Kudlyak (2014) and Basu and House (2016) show that it is the present discounted value of wages that matters for firms' hiring decision in the DMP model. This is especially the case in the presence of implicit contracts whereby wages of newly hired workers respond more to the outside option than wages of existing workers (Beaudry and DiNardo (1991)), as we find in the New Zealand data. An interesting avenue for future research would be to investigate how the user cost of labor (the effective price for new hires) responds to the outside option in New Zealand data.

## **Appendix: Robustness checks**

In this appendix, we conduct a number of robustness checks for the 'All employees' category. Our first robustness check is motivated by the observation in Figure 1 that the regional job-to-job series may contain a structural break around 2008: job-to-job flows in all regions experienced a sharp fall in 2008 and, in many regions, they did not recover fully over the subsequent decade. In order to detect a possible break, we

---

<sup>18</sup>Recent papers, such as Jørgensen and Lansing (2022), argue for an important role of expectations in the behavior of the Phillips Curve.

run the Bai-Perron break test. The test signals the presence of a structural break in 2008Q2. Based on this information, we split the sample at that date and re-estimate specifications (1) to (3) over each sub-period. Table 5 displays the results. Several comments are in order. First, the influence of the job-finding rate appears to have declined over time: the point estimate of the semi-elasticity falls from 0.325 in the first period to 0.157 in the second period. Although small in magnitude, the explanatory power of the job-finding rate remains highly significant in both periods. Second, the effect of job-to-job flows seems to have become somewhat more pronounced over time: the point estimate of the semi-elasticity of earnings with respect to the job-to-job probability increases moderately from 0.878 pre-2008 to 1.175 post-2008. The explanatory power of the job-to-job transition rate is highly significant in both periods. Finally, the influence of the inactivity-to-employment transition rate is highly unstable across the two periods. This striking instability calls for some caution when interpreting the influence of *NE* flows on earnings dynamics in New Zealand. As pointed out in the main text, a caveat of our analysis is that we cannot distinguish between *NE* flows and immigrants to New Zealand who start working shortly after their arrival. We leave that issue for future research.

**Table 5**  
Pre- and Post-Break Estimation

	Pre-2008			Post-2008			
$\Lambda^u$	0.392*** (0.134)	0.326** (0.131)	0.325** (0.129)	$\Lambda^u$	0.195*** (0.061)	0.168*** (0.050)	0.157*** (0.049)
$\Lambda^e$		0.880*** (0.184)	0.878*** (0.180)	$\Lambda^e$		1.226*** (0.303)	1.175*** (0.301)
$\Lambda^n$			0.039 (0.731)	$\Lambda^n$			2.691*** (0.530)

Robust standard errors in parentheses    \*\*\* p<0.01, \*\* p<0.05, \* p<0.1. Number of observations: 1168.

To further explore the nature of the structural break, we perform a second robustness check. Instead of splitting the sample period in 2008, we now introduce a dummy variable, *break*, that takes the value 0 before 2008:Q2 and 1 afterwards. The dummy variable enters in specification (2) and (3) as an interaction term with the job-finding rate  $\Lambda^u$ , the job-to-job transition rate  $\Lambda^e$  and the inactivity-to-employment transition rate  $\Lambda^n$ . The results are reported in Table 6. For both specifications, the slope interaction terms are insignificant, suggesting that the explanatory power of each transition rate stays relatively constant across the two periods. The break appears to be significant, but that comes from the intercept, not from the slope coefficients. Interestingly, the influence of  $\Lambda^n$  is now insignificant. Altogether, the two robustness checks convey the impression that our findings regarding the respective explanatory power of the



**Table 6**  
Full Sample Estimates with Break Interactions

	(2)	(3)
$\Lambda^u$	0.261** (0.110)	0.247** (0.114)
$\Lambda^e$	1.032*** (0.167)	1.025*** (0.188)
$\Lambda^n$		0.907 (0.881)
<i>break</i>	0.616*** (0.016)	0.600*** (0.024)
$\Lambda^u \times \textit{break}$	0.083 (0.060)	-0.078 (0.068)
$\Lambda^e \times \textit{break}$	-0.023 (0.200)	-0.123 (0.248)
$\Lambda^n \times \textit{break}$		1.489 (1.713)

Robust standard errors clustered at regional level in parentheses. \*\*\* p<0.01, \*\* p<0.05, \* p<0.1. Number of observations: 1168.

job-finding rate and the job-to-job transition rate are reasonably robust, and that we should interpret the influence of *NE* flows on earnings with a pinch of salt.

**Table 7**  
Controlling for lagged earnings

	(2)		(3)	
	(a)	(b)	(c)	(d)
$\Lambda^u$	0.204** (0.076)	0.215** (0.082)	0.197** (0.075)	0.207** (0.081)
$\Lambda^e$	1.054*** (0.179)	1.037*** (0.187)	1.004*** (0.177)	0.998*** (0.182)
$\Lambda^n$			1.575*** (0.505)	1.530*** (0.486)
lw(-1)		0.105* (0.059)		0.096 (0.057)

**Note:** Number of observations: 1168. Robust standard errors (clustered at regional level) in parentheses. \*\*\* :  $p < 0.01$ , \*\* :  $p < 0.05$ , \* :  $p < 0.1$ .

Our last robustness check tackles a different issue. For the sake of comparability with Karahan et al. (2017), our baseline specifications did not include the lagged log wage. These regressions all featured time fixed effects which were expected to capture the persistent element in wages. We now check this conjecture by including the lagged log wage in specifications (2) and (3). Looking at Table 7, we see that the lagged log wage term turns out to be economically and statistically insignificant, and its inclusion does not affect noticeably the coefficients of the job finding rate and job-to-job transition rate. This confirms the adequacy of the baseline specifications with time fixed effects.

## References

- Armstrong, Jed, and Özer Karagedikli. 2017. *The role of non-participants in labour market dynamics*. Reserve Bank of New Zealand Analytical Notes series AN2017/01.
- Basu, Susanto, and Christopher House. 2016. "Allocative and Remitted Wages: New Facts and Challenges for Keynesian Models." Edited by John B. Taylor and Harald Uhlig. *Handbook of Macroeconomics* 2A:297–354.
- Beaudry, Paul, and John DiNardo. 1991. "The Effect of Implicit Contracts on the Movement of Wages over the Business Cycle: Evidence from Micro Data." *Journal of Political Economy* 99 (4): 665–688.
- Burdett, Kenneth, and Dale Mortensen. 1998. "Wage Differentials, Employer Size, and Unemployment." *International Economic Review* 39 (2): 257–73.

- Coleman, Andrew, and Özer Karagedikli. 2018. *Residential construction and population growth in New Zealand: 1996-2016*. Reserve Bank of New Zealand Discussion Paper Series DP2018/02.
- Deutscher, Nathan. 2019. *Job-to-job transitions and the wages of Australian workers*. Treasury Working Paper 2019-07. Australian Treasury.
- Elsby, Michael W.L., Bart Hobijn, and Ayşegül Şahin. 2015. “On the importance of the participation margin for labor market fluctuations.” *Journal of Monetary Economics* 72 (C): 64–82.
- Faberman, Jason, and Alejandro Justiniano. 2015. *Job Switching and Wage Growth*. Chicago Fed Letter 337.
- Fallick, Bruce C., and Charles A. Fleischman. 2004. *Employer-to-employer flows in the U.S. labor market: the complete picture of gross worker flows*. Finance and Economics Discussion Series 2004-34. Board of Governors of the Federal Reserve System.
- Gertler, Mark, Christopher Huckfeldt, and Antonella Trigari. 2020. “Unemployment Fluctuations, Match Quality, and the Wage Cyclicity of New Hires.” *The Review of Economic Studies* 87 (4): 1876–1914.
- Haefke, Christian, Marcus Sonntag, and Thijs van Rens. 2013. “Wage Rigidity and Job Creation.” *Journal of Monetary Economics* 60 (8): 887–899.
- Haltiwanger, John C., Henry R. Hyatt, Lisa B. Kahn, and Erika McEntarfer. 2018. “Cyclical Job Ladders by Firm Size and Firm Wage.” *American Economic Journal: Macroeconomics* 10 (2): 52–85.
- Howard, Greg. 2020. “The Migration Accelerator: Labor Mobility, Housing, and Demand.” *American Economic Journal: Macroeconomics* 12, no. 4 (October): 147–179.
- Jørgensen, Peter Lihn, and Kevin J. Lansing. 2022. *Anchored inflation expectations and the slope of the Phillips curve*. Working Paper 2019-27. Federal Reserve Bank of San Francisco.
- Karagedikli, Özer. 2018. *Job-to-job flows and inflation: Evidence from administrative data in New Zealand*. Reserve Bank of New Zealand Analytical Notes series AN2018/09.
- Karahan, Fatih, Ryan Michaels, Benjamin Pugsley, Ayşegül Şahin, and Rachel Schuh. 2017. “Do Job-to-Job Transitions Drive Wage Fluctuations over the Business Cycle?” *American Economic Review* 107 (5): 353–357.
- Katz, Lawrence F., and Alan B. Krueger. 1999. “The High-Pressure U.S. Labor Market of the 1990s.” *Brookings Papers on Economic Activity* 30 (1): 1–88.
- Kudlyak, Marianna. 2014. “The cyclicity of the user cost of labor.” *Journal of Monetary Economics* 68 (C): 53–67.
- Moscarini, Giuseppe, and Fabien Postel-Vinay. 2016. “Wage Posting and Business Cycles.” *American Economic Review* 106 (5): 208–213.
- . 2017. “The Relative Power of Employment-to-Employment Reallocation and Unemployment Exits in Predicting Wage Growth.” *American Economic Review* 107 (5): 364–368.

- Mukoyama, Toshihiko, Christina Patterson, and Aysegul Sahin. 2018. "Job Search Behavior over the Business Cycle." *American Economic Journal: Macroeconomics* 10 (1): 190–215.
- Petrosky-Nadeau, Nicolas, and Etienne Wasmer. 2017. *Labor, Credit, and Goods Markets: The Macroeconomics of Search and Unemployment*. Vol. 1. MIT Press Books. The MIT Press.
- Pissarides, Christopher A. 2000. *Equilibrium Unemployment Theory, 2nd Edition*. Vol. 1. MIT Press Books. The MIT Press.

## **Integrated Data Infrastructure Disclaimer**

The results in this report are not official statistics, they have been created for research purposes from the Integrated Data Infrastructure (IDI) managed by Statistics New Zealand.

Access to the anonymised data used in this study was provided by Statistics NZ in accordance with security and confidentiality provisions of the Statistics Act 1975. Only people authorised by the Statistics Act 1975 are allowed to see data about a particular person, household, business or organisation and the results in this paper have been confidentialised to protect these groups from identification.

Careful consideration has been given to the privacy, security and confidentiality issues associated with using administrative and survey data in the IDI. Further detail can be found in the Privacy impact assessment for the Integrated Data Infrastructure available from [www.stats.govt.nz](http://www.stats.govt.nz).

The results are based in part on tax data supplied by Inland Revenue to Statistics NZ under the Tax Administration Act 1994. This tax data must be used only for statistical purposes, and no individual information may be published or disclosed in any other form, or provided to Inland Revenue for administrative or regulatory purposes.

Any person who has had access to the unit-record data has certified that they have been shown, have read, and have understood section 81 of the Tax Administration Act 1994, which relates to secrecy. Any discussion of data limitations or weaknesses is in the context of using the IDI for statistical purposes, and is not related to the ability of these data to support Inland Revenue's core operational requirements.

## **TEPP Working Papers 2022**

---

### **22-4. Endogenous timing of technological choices of flexibility in a mixed duopoly**

Armel Jacques

### **22-3. Reducing ethnic discrimination through formal warning : evidence from two combined field experiments**

Sylvain Chareyron, Yannick L'Horty, Souleymane Mbaye, Pascale Petit

### **22-2. Cream skimming and Discrimination in access to medical care: a field experiment**

Sylvain Chareyron, Yannick L'horty, Pascale Petit

### **22-1. Optimal taxation with multiple incomes and types**

Kevin Spiritus, Etienne Lehmann, Sander Renes, Floris T. Zoutman

---

## **TEPP Working Papers 2021**

---

### **21-11. Intermittent collusive agreements : antitrust policy and business cycles**

Emilie Dargaud, Armel Jacques

### **21-10. Endogenous breadth of collusive agreements : an application to flexible technological choices**

Emilie Dargaud, Armel Jacques

### **21-9. How to tax different incomes?**

Laurence Jacquet, Etienne Lehmann

### **21-8. Does optimal capital taxation under stochastic returns to savings**

Eddy Zanoutene

### **21-7. Does the gender mix influence collective bargaining on gender equality? Evidence from France**

Anne-Sophie Bruno, Nathalie Greenan, Jérémy Tanguy

### **21-6. The effects of the non-financial component of business accelerators**

Fabrice Gilles, Yannick L'Horty, Ferhat Mihoubi

### **21-5. Organisational changes and long term sickness absence and injury leave**

Mohamed Ali Ben Halima, Nathalie Greenan, Joseph Lanfranchi

### **21-4. The unexplored discriminations towards youth : equal access to goods and services**

David Gray, Yannick L'Horty, Souleymane Mbaye, Pascale Petit

### **21-3. The zero effect of income tax on the timing of birth: some evidence on French data**

Nicolas Moreau

### **21-2. Tropical cyclones and fertility : new evidence from Madagascar**

Idriss Fontaine, Sabine Garabedian, David Nortes-Martinez, H el ene V er emes

### **21-1. On the heterogeneous impacts of the COVID-19 lockdown on US unemployment**

Malak Kandoussi, Fran ois Langot

---

## **TEPP Working Papers 2020**

---

### **20-8. COVID-19 mortality and health expenditures across European countries: The positive correlation puzzle**

Serge Blondel, Radu Vranceanu

### **20-7. Measuring discrimination in the labour market**

Emmanuel Duguet

### **20-6. The effects of age on educational performances at the end of primary school: cross-sectional and regression discontinuity approach applications from Reunion Island**

Daniel Rakotomalala

### **20-5. Slowdown antitrust investigations by decentralization**

Emilie Dargaud, Armel Jacques

### **20-4. Is international tourism responsible for the pandemic of COVID19? A preliminary cross-country analysis with a special focus on small islands**

Jean-François Hoarau

### **20-3. Does labor income react more to income tax or means tested benefit reforms?**

Michaël Sicsic

### **20-2. Optimal sickness benefits in a principal-agent model**

Sébastien Ménard

### **20-1. The specific role of agriculture for economic vulnerability of small island spaces**

Stéphane Blancard, Maximin Bonnet, Jean-François Hoarau

---

## **TEPP Working Papers 2019**

---

### **19-8. The impact of benefit sanctions on equilibrium wage dispersion and job vacancies**

Sebastien Menard

### **19-7. Employment fluctuations, job polarization and non-standard work: Evidence from France and the US**

Olivier Charlot, Idriss Fontaine, Thepthida Sopraseuth

### **19-6. Counterproductive hiring discrimination against women: Evidence from French correspondence test**

Emmanuel Duguet, Loïc du Parquet, Yannick L'Horty, Pascale Petit

### **19-5. Inefficient couples: Non-minimization of the tax burden among French cohabiting couples**

Olivier Bargain, Damien Echevin, Nicolas Moreau, Adrien Pacifico

### **19-4. Seeking for tipping point in the housing market: evidence from a field experiment**

Sylvain Chareyron, Samuel Gorohouna, Yannick L'Horty, Pascale Petit, Catherine Ris

### **19-3. Testing for redlining in the labor market**

Yannick L'Horty, Mathieu Bunel, Pascale Petit

### **19-2. Labour market flows: Accounting for the public sector**

Idriss Fontaine, Ismael Galvez-Iniesta, Pedro Gomes, Diego Vila-Martin

### **19-1. The interaction between labour force participation of older men and their wife: lessons from France**

Idriss Fontaine

---



## **TEPP Working Papers 2018**

---

### **18-15. Be healthy, be employed: a comparison between the US and France based on a general equilibrium model**

Xavier Fairise, François Langot, Ze Zhong Shang

### **18-14. Immigrants' wage performance in the routine biased technological change era: France 1994-2012**

Catherine Laffineur, Eva Moreno-Galbis, Jeremy Tanguy, Ahmed Tritah

### **18-13. Welfare cost of fluctuations when labor market search interacts with financial frictions**

Elini Iliopoulos, François Langot, Thepthida Sopraseuth

### **18-12. Accounting for labor gaps**

François Langot, Alessandra Pizzo

### **18-11. Unemployment fluctuations over the life cycle**

Jean-Olivier Hairault, François Langot, Thepthida Sopraseuth

### **18-10. Layoffs, Recalls and Experience Rating**

Julien Albertini, Xavier Fairise

### **18-9. Environmental policy and health in the presence of labor market imperfections**

Xavier Pautrel

### **18-8. Identity mistakes and the standard of proof**

Marie Obidzinski, Yves Oytana

### **18-7. Presumption of innocence and deterrence**

Marie Obidzinski, Yves Oytana

### **18-6. Ethnic Discrimination in Rental Housing Market: An Experiment in New Caledonia**

Mathieu Bunel, Samuel Gorohouna, Yannick L'Horty, Pascale Petit, Catherine Ris

### **18-5. Evaluating the impact of firm tax credits. Results from the French natural experiment CICE**

Fabrice Gilles, Yannick L'Horty, Ferhat Mihoubi, Xi Yang

### **18-4. Impact of type 2 diabetes on health expenditure: an estimation based on individual administrative data**

François-Olivier Baudot, Anne-Sophie Aguadé, Thomas Barnay, Christelle Gastaldi-Ménager, Anne Fargot-Campagna

### **18-3. How does labour market history influence the access to hiring interviews?**

Emmanuel Duguet, Rémi Le Gall, Yannick L'Horty, Pascale Petit

### **18-2. Occupational mobility and vocational training over the life cycle**

Anthony Terriau

### **18-1. Retired, at last? The short-term impact of retirement on health status in France**

Thomas Barnay, Eric Defebvre

---

## **TEPP Working Papers 2017**

---

### **17-11. Hiring discrimination against women: distinguishing taste based discrimination from statistical discrimination**

Emmanuel Duguet, Loïc du Parquet, Pascale Petit

### **17-10. Pension reforms, older workers' employment and the role of job separation and finding rates in France**

Sarah Le Duigou, Pierre-Jean Messe

### **17-9. Healthier when retiring earlier? Evidence from France**

Pierre-Jean Messe, François-Charles Wolff

### **17-8. Revisiting Hopenhayn and Nicolini's optimal unemployment insurance with job search monitoring and sanctions**

Sebastien Menard, Solenne Tanguy

### **17-7. Ethnic Gaps in Educational Attainment and Labor-Market Outcomes: Evidence from France**

Gabin Langevin, David Masclet, Fabien Moizeau, Emmanuel Peterle

### **17-6. Identifying preference-based discrimination in rental market: a field experiment in Paris**

Mathieu Bunel, Yannick L'Horty, Loïc du Parquet, Pascale Petit

### **17-5. Chosen or Imposed? The location strategies of households**

Emilie Arnoult, Florent Sari

### **17-4. Optimal income taxation with composition effects**

Laurence Jacquet, Etienne Lehmann

### **17-3. Labor Market Effects of Urban Riots: an experimental assessment**

Emmanuel Duguet, David Gray, Yannick L'Horty, Loïc du Parquet, Pascale Petit

### **17-2. Does practicing literacy skills improve academic performance in first-year university students? Results from a randomized experiment**

Estelle Bellity, Fabrices Gilles, Yannick L'Horty

### **17-1. Raising the take-up of social assistance benefits through a simple mailing: evidence from a French field experiment**

Sylvain Chareyron, David Gray, Yannick L'Horty

---

## **TEPP Working Papers 2016**

---

### **16-8. Endogenous wage rigidities, human capital accumulation and growth**

Ahmed Tritah

### **16-7. Harder, better, faster...yet stronger? Working conditions and self-declaration of chronic diseases**

Eric Defebvre

### **16-6. The influence of mental health on job retention**

Thomas Barnay, Eric Defebvre

### **16-5. The effects of breast cancer on individual labour market outcomes: an evaluation from an administrative panel**

Thomas Barnay, Mohamed Ali Ben Halima, Emmanuel Duguet, Christine Le Clainche, Camille Regaert

### **16-4. Expectations, Loss Aversion, and Retirement Decisions in the Context of the 2009 Crisis in Europe**

Nicolas Sirven, Thomas Barnay

### **16-3. How do product and labor market regulations affect aggregate employment, inequalities and job polarization? A general equilibrium approach**

Julien Albertini, Jean-Olivier Hairault, François Langot, Thepthida Sopraseuth

### **16-2. Access to employment with age and gender: results of a controlled experiment**

Laetitia Challe, Florent Fremigacci, François Langot, Yannick L'Horty, Loïc Du Parquet, Pascale Petit

### **16-1. An evaluation of the 1987 French Disabled Workers Act: Better paying than hiring**

Thomas Barnay, Emmanuel Duguet, Christine Le Clainche, Yann Videau

---

## **TEPP Working Papers 2015**

---

### **15-10. Optimal Income Taxation with Unemployment and Wage Responses: A Sufficient Statistics Approach**

Kory Kroft, Kavan Kucko, Etienne Lehmann, Johannes Schmieder

### **15-9. Search frictions and (in) efficient vocational training over the life-cycle**

Arnaud Chéron, Anthony Terriau

### **15-8. Absenteeism and productivity: the experience rating applied to employer contributions to health insurance**

Sébastien Ménard, Coralia Quintero Rojas

### **15-7. Take up of social assistance benefits: the case of homeless**

Sylvain Chareyron

### **15-6. Spatial mismatch through local public employment agencies. Answers from a French quasi-experiment**

Mathieu Bunel, Elisabeth Tovar

### **15-5. Transmission of vocational skills at the end of career: horizon effect and technological or organisational change**

Nathalie Greenan, Pierre-Jean Messe

### **15-4. Protecting biodiversity by developing bio-jobs: A multi-branch analysis with an application on French data**

Jean De Beir, Céline Emond, Yannick L'Horty, Laetitia Tuffery

### **15-3. Profit-Sharing and Wages: An Empirical Analysis Using French Data Between 2000 and 2007**

Noémie Delahaie, Richard Duhautois

### **15-2. A meta-regression analysis on intergenerational transmission of education: publication bias and genuine empirical effect**

Nicolas Fleury, Fabrice Gilles

### **15-1. Why are there so many long-term unemployed in Paris?**

Yannick L'Horty, Florent Sari

---

## **TEPP Working Papers 2014**

---

### **14-14. Hiring discrimination based on national origin and the competition between employed and unemployed job seekers**

Guillaume Pierné

### **14-13. Discrimination in Hiring: The curse of motorcycle women**

Loïc Du Parquet, Emmanuel Duguet, Yannick L'Horty, Pascale Petit

### **14-12. Residential discrimination and the ethnic origin: An experimental assessment in the Paris suburbs**

Emmanuel Duguet, Yannick L'Horty, Pascale Petit

### **14-11. Discrimination based on place of residence and access to employment**

Mathieu Bunel, Yannick L'Horty, Pascale Petit

### **14-10. Rural Electrification and Household Labor Supply: Evidence from Nigeria**

Claire Salmon, Jeremy Tanguy

### **14-9. Effects of immigration in frictional labor markets: theory and empirical evidence from EU countries**

Eva Moreno-Galbis, Ahmed Tritah

### **14-8. Health, Work and Working Conditions: A Review of the European Economic Literature**

Thomas Barnay

### **14-7. Labour mobility and the informal sector in Algeria: a cross-sectional comparison (2007-2012)**

Philippe Adair, Youghourta Bellache

### **14-6. Does care to dependent elderly people living at home increase their mental health?**

Thomas Barnay, Sandrine Juin

### **14-5. The Effect of Non-Work Related Health Events on Career Outcomes: An Evaluation in the French Labor Market**

Emmanuel Duguet, Christine le Clainche

### **14-4. Retirement intentions in the presence of technological change: Theory and evidence from France**

Pierre-Jean Messe, Eva Moreno-Galbis, Francois-Charles Wolff

### **14-3. Why is Old Workers' Labor Market more Volatile? Unemployment Fluctuations over the Life-Cycle**

Jean-Olivier Hairault, François Langot, Thepthida Sopraseuth

### **14-2. Participation, Recruitment Selection, and the Minimum Wage**

Frédéric Gavrel

### **14-1. Disparities in taking sick leave between sectors of activity in France: a longitudinal analysis of administrative data**

Thomas Barnay, Sandrine Juin, Renaud Legal

---

## **TEPP Working Papers 2013**

---

### **13-9. An evaluation of the impact of industrial restructuring on individual human capital accumulation in France (1956-1993)**

Nicolas Fleury, Fabrice Gilles

### **13-8. On the value of partial commitment for cooperative investment in buyer-supplier relationship**

José de Sousa, Xavier Fairise

### **13-7. Search frictions, real wage rigidities and the optimal design of unemployment insurance**

Julien Albertini, Xavier Fairise

### **13-6. Tax me if you can! Optimal nonlinear income tax between competing governments**

Etienne Lehmann, Laurent Simula, Alain Trannoy

### **13-5. Beyond the labour income tax wedge: The unemployment-reducing effect of tax progressivity**

Etienne Lehmann, Claudio Lucifora, Simone Moriconi, Bruno Van Der Linden

### **13-4. Discrimination based on place of residence and access to employment**

Mathieu Bunel, Emilia Ene Jones, Yannick L'Horty, Pascale Petit

### **13-3. The determinants of job access channels: evidence from the youth labor market in France**

Jihan Ghrairi

### **13-2. Capital mobility, search unemployment and labor market policies: The case of minimum wages**

Frédéric Gavrel

### **13-1. Effort and monetary incentives in Nonprofit et For-Profit Organizations**

Joseph Lanfranchi, Mathieu Narcy

---

## **The TEPP Institute**

---

The CNRS **Institute for Theory and Evaluation of Public Policies** (the TEPP Institute, FR n°2024 CNRS) gathers together research centres specializing in economics and sociology:

- **L'Equipe de Recherche sur l'Utilisation des Données Individuelles en lien avec la Théorie Economique** (Research Team on Use of Individuals Data in connection with economic theory), **ERUDITE**, University of Paris-Est Créteil and University of Gustave Eiffel
- Le **Centre d'Etudes des Politiques Economiques de l'université d'Evry** (Research Centre focused on the analysis of economic policy and its foundations and implications), **EPEE**, University of Evry Val d'Essonne
- Le **Centre Pierre Naville** (Research on Work and Urban Policies), **CPN**, University of Evry Val d'Essonne
- Le **Groupe d'Analyse des Itinéraires et des Niveaux Salariaux** (Group on Analysis of Wage Levels and Trajectories), **GAINS**, University of Le Mans
- Le **Centre de Recherches en Economie et en Management**, (Research centre in Economics and Management), **CREM**, University of Rennes 1 et University of Caen Basse-Normandie
- Le **Groupe de Recherche Angevin en Économie et Management** (Angevin Research Group in Economics and Management), **GRANEM**, University of Angers
- Le **Centre de Recherche en Economie et Droit** (Research centre in Economics and Law) **CRED**, University of Paris II Panthéon-Assas
- Le **Laboratoire d'Economie et de Management Nantes-Atlantique** (Laboratory of Economics and Management of Nantes-Atlantique) **LEMNA**, University of Nantes
- Le **Laboratoire interdisciplinaire d'étude du politique Hannah Arendt** – Paris Est, **LIPHA-PE**
- Le **Centre d'Economie et de Management de l'Océan Indien**, **CEMOI**, University of La Réunion

TEPP brings together 230 teacher-researchers and 100 doctoral students. It is both one of the main academic operators in the evaluation of public policies in France, and the largest multidisciplinary federation of research on work and employment. It responds to the demand for impact assessment of social programs using advanced technologies combining theoretical and econometric modeling, qualitative research techniques and controlled experiences.